

General Criteria

Easy On-Line Registration & Payment

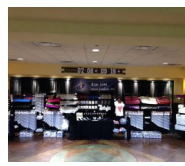
- **EASY PAYMENT** Via **PayPal** Money Order, or Cashiers Check. PP secure free accounts.
- **NO REFUNDS** after the Twirl Mania Deadline **December 1, 2018! Midnight**
- **CURRENCY Exchange:** www.currencyguide.com
- **CORRECT DIVISION** Please be sure to enter the correct division you will be eligible for at Twirl Mania. (see page 4). If you are planning to enter competitions **PRIOR** to Twirl Mania and **AFTER** the TM deadline, please move to the next division if you are close to your limit of wins, as **NO CHANGES** can be made after the TM deadline, **December 1, 2018**. In order to facilitate a well organized championships for everyone, this rule will be enforced. Return confirmed required!
- **E-MAIL CONFIRMATION** will be sent upon completed registration. If there are any discrepancies with your entry we must be notified within 2 days of email confirmation date. If we do not hear from you within 48 hours your entry will remain AS IS with no changes.
- **PLEASE use Active Parent / Adult Email ONLY** for important verification of events when registering at TwirlManiaOnline.com
- **Walt Disney World® Resort Waiver Form & Twirl Mania Waiver form** must be Uploaded to the TMOOnline.com entry site by the **DEADLINE: 12/1/2018 ~ along with completed Entry Music (if required), Payment & Confirmation.** Please print a copy of your registration confirmation.
- **PROGRAM BOOKS** will be available for pick-up or purchase beginning 3:00-5:00pm Thursday, 2/14/19 and continued through 2/17/2019 at the TM Information Desk. See schedule for times.
- **NEWBEE** walk-through at 3:30pm and 4:00pm. Thursday 2/14/2019 at EWWS HP Field House.

ESPECIALLY FOR YOU!

FANTASTIC COMPANIES will be on hand for all your twirling and shopping needs. Two great locations of companies located on Level 1 and Level 2 of the HP Field House.



2018 Vendors



Twirl Mania Disney Event **MERCHANDISE** is only available on site for purchase **DURING** the event.